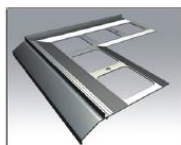
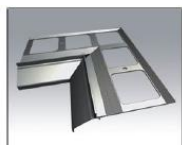


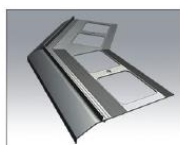
COMPLEMENTARY PRODUCTS



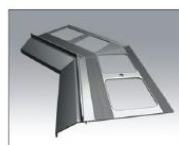
OC 10/90



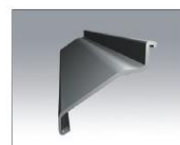
IC 10/90



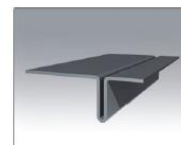
OC 10/135



IC 10/135



C 100


 Horizontal expansion
connector

APPLICATIONS:

D10 is an eaves profile for balconies edging with thin-film resin floors. The construction of the profile allows for a tight connection with insulation and resin floor. The profile is made of aluminium covered with polyester, which allows for a tight connection with insulation and resin floor. The product is used in systems with cementitious mortar or resin insulation with a 2-3 mm thick resin floor.

PROPERTIES:

- effective water drainage from the floor
- corrosion and weather resistance
- tightness in eaves areas
- comprehensive solution ensuring a simple and quick assembly
- aesthetic appearance

TECHNICAL DATA:

BASE	aluminium covered with polyester
Weight	750 g/m
Polyester layer thickness	ca. 70 µm
Colour	RAL 7037, 8019, 7024

BASE TYPE:

Cement subfloors, other subfloors with appropriate rigidity and carrying capacity.

BASE PREPARATION:

The base must have an appropriate carrying capacity; it must also be even and clean. Cement subfloors should be set, seasoned with appropriate settlement joints. Along the balcony edge, within the width of the mounted profile (80 mm), the base should have an offset (ca. 3 mm down) so that once the profile is mounted, its surface faces the surface of the subfloor.

The offset may be made with the use of an ABS mounting template (available with profiles):

1. In the case of a new cement subfloor - by setting the mounting template in mortar.
2. In the case of a set cement subfloor - by placing the mounting template on it and aligning the subfloor to the upper surface with a levelling mortar.

TOOLS:

Pocket rule or pocket tape, saw for cutting aluminium, knife, mixer or low-speed electric drill, basket mixer, stainless steel trowel, brush, paintbrush, putty knife or trowel, scaled container. The use of hand saws and chainsaws for cutting aluminium is allowed. It is not allowed to use tools, such as angle grinders, which cause thermal effect (rapid temperature increase) for cutting profiles.

CONSTRUCTION REQUIREMENTS:

Profiles must be mounted under conditions suitable for the use of insulation and assembly materials (cementitious mortar, mechanical or chemical connectors, other materials), according to the data sheets of these materials. The smoothed surface should be protected against over drying and damping.

ASSEMBLY:

Begin the installation from the corners. Once they are preset, mark the mechanical mounting spot, drill the openings, fix the plastic anchor and prefix the corners in order to measure the sections of straight profiles. Measure the profiles in such a way, that leaves ca. 2 mm settlement joints at connections and 5 mm settlement joints at walls and other building fixed elements. Mark the mechanical mounting spots for straight profiles, drill the openings and fix the plastic anchor. On the surface of the previously made fault in the subfloor, along the edge of the balcony, put a thin layer of cementitious mortar. Fix the corners and straight profiles on the mortar properly and evenly. Partly screw the screws of plastic anchor in and once the cementitious mortar sets initially, screw them in completely. Fix horizontal settlement connections below the profiles and C10 connections on the exterior at the height of settlement connections (profile and corner connections). Fill in the expansion gap, along the entire length, with elastic mastic (for outdoor use, e.g. polyurethane). Put 15 cm wide cementitious mortar along the inner profile edge at the junction with cement subfloor. Then, set min. 10 cm wide reinforcement tape in the mortar so that the tape covers the junction. Next, waterproof with a suitable cementitious mortar, according to the information included in the manufacturer's technical data sheet.

If a different type of waterproofing is used, connect the profile according to the specificity of a given waterproofing type.

Resin floor should be constructed in accordance with the material's technical data sheet.

Construction of the profile is shown in the figure, which shows its applications.

GENERAL RECOMMENDATIONS - ASSEMBLY:

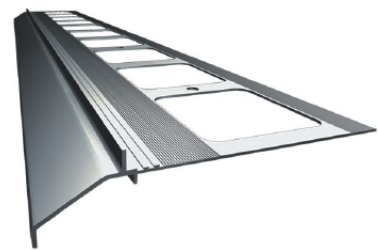
When carrying out the work, protect the profiles paintwork against damage. It is not allowed to mount damaged profiles. If dirty, the profiles should be immediately cleaned with water and non-abrasive cloth. Do not allow the dirt (e.g. cementitious mortar or adhesives) to harden on the outer surface of the profiles. The manufacturer is not liable for damages resulting from improper use of the product, use of inappropriate auxiliary materials and use of wrong tools. The work should be carried out in accordance with the design, technical data sheet, relevant standards, rules of the trade and safety regulations.

GENERAL RECOMMENDATIONS - USE:

Clean the profiles at least twice a year. Clean with clear water and non-abrasive cloth. Do not use strong acid or alkaline cleaners and surfactants which may react with aluminium. Do not use organic solvents with esters, ketones, aromatic compounds, glycol esters, chlorinated hydrocarbons, etc. After each cleaning the surface must be immediately rinsed with clear cold water. Do not use salt and chemicals for defrosting near the profiles. It is recommended to carry out technical inspection of balconies and terraces twice a year in order to check the technical condition of individual elements. Any defects should be removed as soon as possible.



EAVES PROFILE FOR TERRACES AND BALCONIES WITH THIN-FILM RESIN FLOOR



TRANSPORT AND STORAGE:

Profiles should be transported in covered, dry and clean means of transport, in original cardboard packaging and protected against mechanical damage. Store in dry and clean rooms, where no active chemical vapours and gases are present.

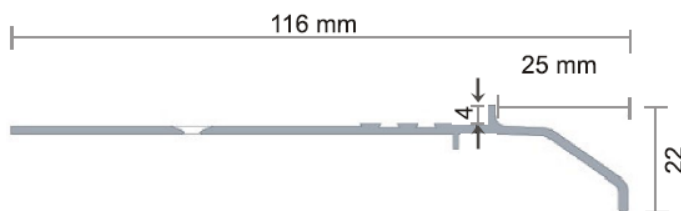
PACKAGING:

D10 profile: 2 m long, 4 pcs in cardboard packaging
 Corners: 1 pc in cardboard packaging
 L10 connector: 10 pcs in cardboard packaging
 ABS mounting template: 2 m long, 10 pcs in packaging

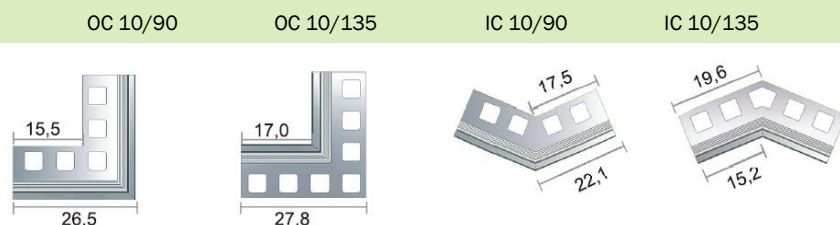
Additionally, the packaging includes:

Plastic anchors: 4 pcs for 1 profile, 2 pcs for 1 corner
 Horizontal settlement connections: 2 pcs for 1 profile, 2 pcs for 1 corner

PROFILE SHAPE:

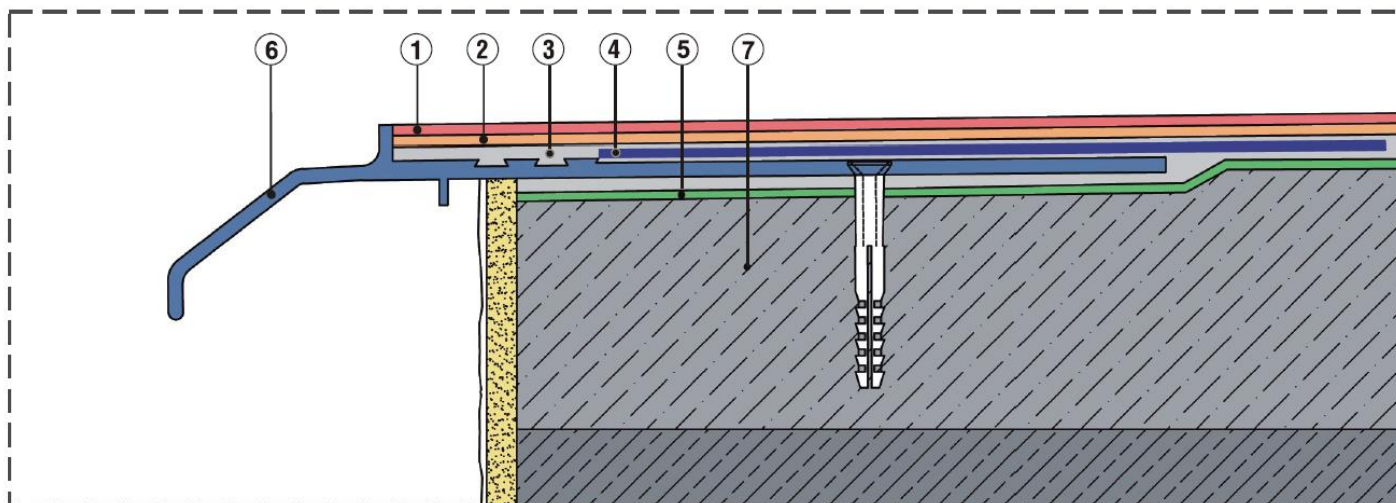


CORNERS:



APPLICATIONS OF EAVES PROFILE:

EAVES DETAIL



1. Protective layer
2. Resing floor
3. Waterproofing
4. Reinforcement tape
5. Waterproofing
6. D10 eaves profile
7. Cement underlayment

D PLAST®

REMARKS:

This "Technical Data Sheet" supersedes the previous sheet.

The information above applies only to general conditions of use of our products and is not a substitution to technical design. If you intend to use the products under conditions other than those specified in the "Technical Data Sheet," the contractor is obliged to ensure that D PLAST products are appropriate for use in these conditions. When working with D PLAST products, it is recommended to use materials from trusted manufacturers. The responsibility of D PLAST a.s. as to the scope and nature of this information may relate only to claims in the case of gross fault (intent or negligence).