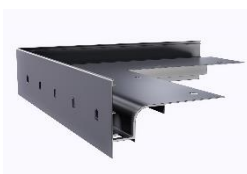




# EAVES PROFILE

FOR A FLOOR OF STONE, CONCRETE OR THICK TILES ON DISTANCE PADS

## COMPLEMENTARY PRODUCTS:



OC 80/90



D15 Underlying target



IC 80/90



D4 Underlying target



C 80 Connector



D4 Plus Underlying target



WB 80 Wall Bumper

## APPLICATION:

D80 eaves profile for terraces edging over heated rooms with stone, concrete or ceramic tiles floors. It is made of aluminium covered with a polyester coating. It is used with waterproofing made of PVC membrane, EPDM membrane, bituminous roller and coating paper systems and mineral insulation systems.

The profile D80 construction ensures efficient and stable support of the plates along the terrace edge. Thanks to drainage holes in the profile it is possible to drain water from under the floor.

## PROPERTIES:

- effective water drainage from the floor
- corrosion and weather resistance
- tightness in eaves areas
- comprehensive solution ensuring a simple and quick assembly
- aesthetic appearance
- system downpipe mounting

## TECHNICAL DATA:

BASE	Aluminium covered with polyester
Weight	1200 g/m
Polyester layer thickness	ca. 70 µm
Colour	RAL 7037, 8019, 7024

## BASE TYPE:

Cement subfloors, other subfloors with appropriate rigidity and carrying capacity.

## BASE PREPARATION:

The base must have an appropriate carrying capacity; it must also be even and clean. Cement subfloors should be set, seasoned, free from cracks with appropriate settlement joints. Along the balcony edge, within the width of the mounted profile (80 mm), the base should have an offset (ca. 3 mm down) so that once the profile is mounted, its surface faces the surface of the subfloor.

The offset may be made with the use of an ABS mounting template (available with profiles):

1. In the case of a new cement subfloor - by setting the mounting template in mortar at the time of its setting.
2. In the case of a set cement subfloor - by placing the mounting template on it and aligning the subfloor to the upper surface with a levelling mortar.

## TOOLS:

Pocket rule or pocket tape, saw for cutting aluminium, knife, mixer or low-speed electric drill, basket mixer, stainless steel trowel, brush, paintbrush, putty knife or trowel, scaled container. The use of hand saws and chainsaws for cutting aluminium is allowed. It is not allowed to use tools, such as angle grinders, which cause thermal effect (rapid temperature increase) for cutting profiles.

## CONSTRUCTION REQUIREMENTS:

Profiles must be mounted under conditions suitable for the use of insulation and assembly materials (cementitious mortar, mechanical or chemical connectors, other materials), according to the data sheets of these materials. The smoothed surface should be protected against overdrying and damping.

## ASSEMBLY:

Start the work from mounting the corners. Once they are preset, mark the mechanical mounting spots, drill openings, fill them in with bituminous mix, fix rawplugs tubes, fix vertical settlement connections and then fix the corners with steel screws. Then measure the sections of straight profiles. Measure the profiles in such a way, that leaves ca. 2 mm settlement joints at connections. Mount the straight profiles similarly to corners - properly and evenly. Fix C80 connections on the exterior at the height of settlement connections (profile and corner connections).

Next lay the waterproofing layer up to the drainage trough.

Construction of the profile is shown in the figure, which shows its applications.

## GENERAL RECOMMENDATIONS - ASSEMBLY:

When carrying out the work, protect the profiles paintwork against damage. It is not allowed to mount damaged profiles. If dirty, the profiles should be immediately cleaned with water and non-abrasive cloth. Do not allow the dirt (e.g. cementitious mortar or adhesives) to harden on the outer surface of the profiles. The manufacturer is not liable for damages resulting from improper use of the product, use of inappropriate auxiliary materials and use of wrong tools. The work should be carried out in accordance with the design, technical data sheet, relevant standards, rules of the trade and safety regulations.

## GENERAL RECOMMENDATION - USE:

Clean the profiles at least twice a year. Clean with clear water and non-abrasive cloth. Do not use strong acid or alkaline cleaners and surfactants which may react with aluminium. Do not use organic solvents with esters, ketones, aromatic compounds, glycol esters, chlorinated hydrocarbons, etc. After each cleaning the surface must be immediately rinsed with clear cold water. Do not use salt and chemicals for defrosting near the profiles. It is recommended to carry out technical inspection of balconies and terraces twice a year in order to check the technical condition of individual elements. Any defects should be removed as soon as possible.



# EAVES PROFILE

FOR A FLOOR OF STONE, CONCRETE OR THICK TILES  
ON DISTANCE PADS



## TRANSPORT AND STORAGE:

Profiles should be transported in covered, dry and clean means of transport, in original cardboard packaging and protected against mechanical damage. Store in dry and clean rooms, where no active chemical vapours and gases are present.

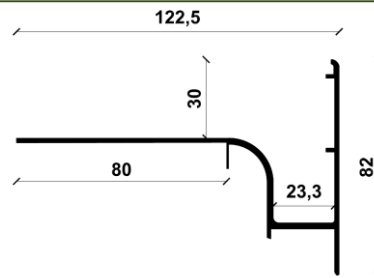
## PACKAGING:

D80 profile: 2 m long, 2 pcs in cardboard packaging.  
Corners: 1 pc in cardboard packaging.  
C80 connector: 10 pcs in cardboard packaging.

Additionally, the packaging includes:  
Rawplugs: 4 pcs for 1 profile, 2 pcs for 1 corner.

Wall bumper WB 80 – 1 set (right + left)

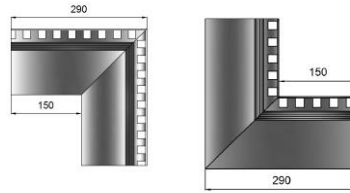
## PROFILE SHAPE:



## CORNERS:

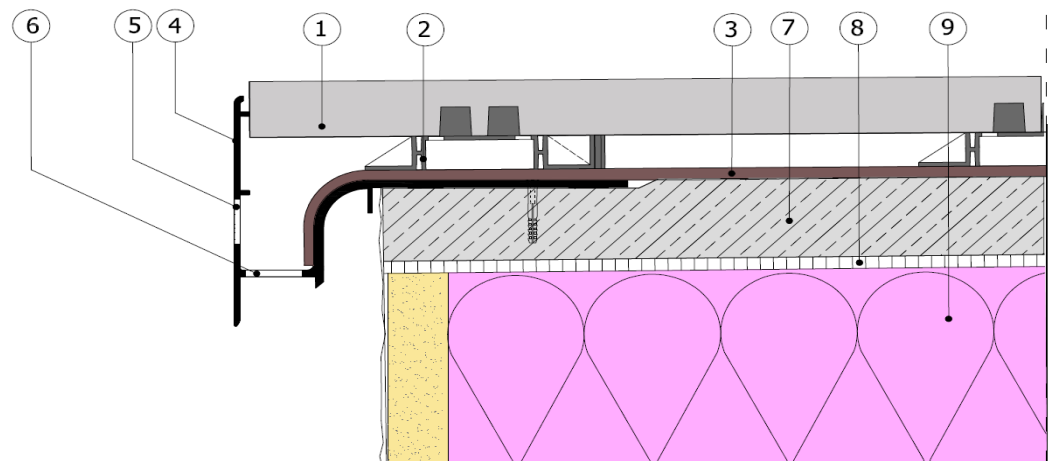
OC 80/90

IC 80/90



## APPLICATIONS OF EAVES PROFILE:

### EAVES DETAILS



1. Thick stone, concrete or ceramic tiles
2. Underlying target D15, D4 or D4 plus
3. Waterproofing
4. D80 eaves profile

5. Overflow hole
6. Drain hole
7. Cement subfloor (reinforced)
8. PE film
9. Thermal insulation (compression strength > 300 kPa)



#### REMARKS:

This "Technical Data Sheet" supersedes the previous sheet.

The information above applies only to general conditions of use of our products and is not a substitution to technical design. If you intend to use the products under conditions other than those specified in the "Technical Data Sheet," the contractor is obliged to ensure that D PLAST products are appropriate for use in these conditions. When working with D PLAST products, it is recommended to use materials from trusted manufacturers. The responsibility of D PLAST a.s. as to the scope and nature of this information may relate only to claims in the case of gross fault (intent or negligence).